



## **MEMORY SAVER MANUAL**

- Memory Saver Utility

# **sewoo** **3" THERMAL POS PRINTER**

**MODEL : SLK-TS100, TS200, CB125**

Rev. 03 / 2026

Aroot Co., Ltd.

The manual and product are protected by copyright.

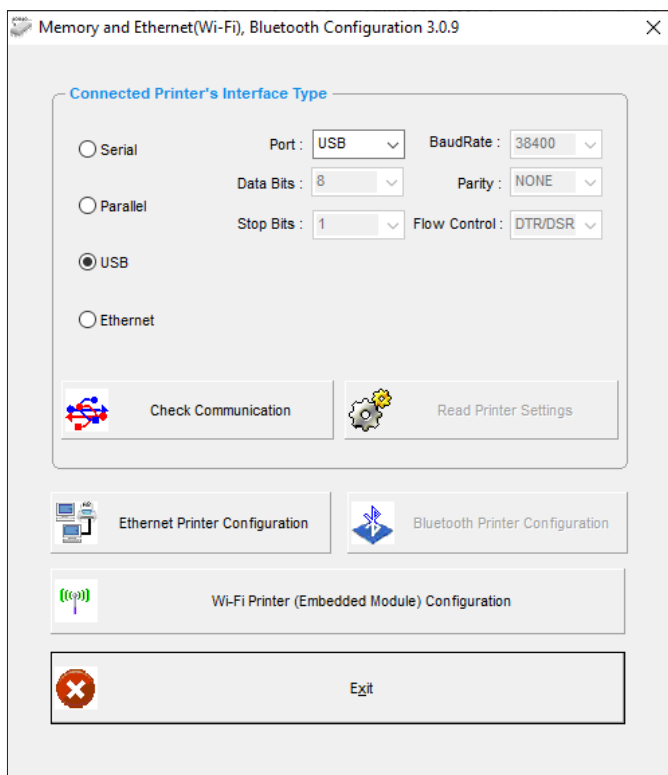


# Table of Contents

1. Instruction	3
2-1. Printer Settings(Config)	4
2-2. Printer Settings(Interface)	7
2-3. Printer Setting(NV)	8
2-4. Printer Settings(BlackMark)	10
3. TCP/IP, Ethernet Setting	11
4. Wi-Fi Setting	13
5. Bluetooth Setting	17

You can change the printer's settings using the Utility.

- 1 Make sure you are using a PC running Windows XP or higher.
- 2 Download the Utility from the [www.miniprinter.com](http://www.miniprinter.com) website.
- 3 Connect the PC and printer.  
(Serial or Parallel or USB or Ethernet, USB communication is recommended)
- 4 When you run the Utility, you can see the screen below.



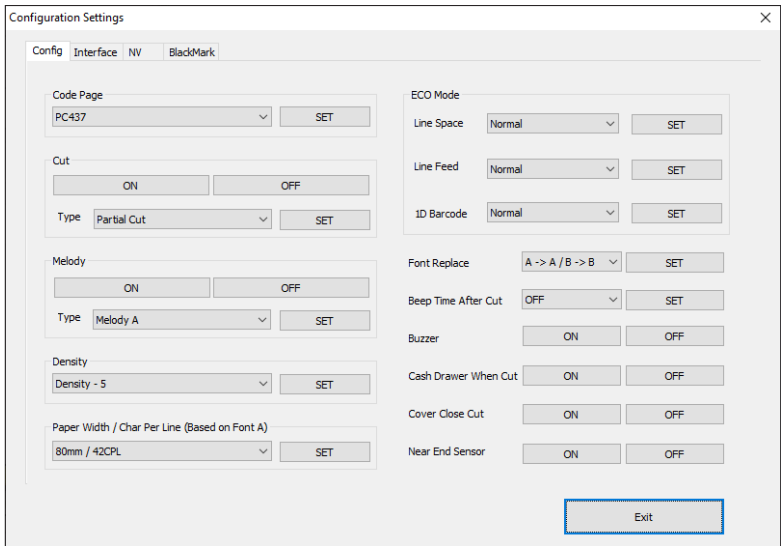
- 5 Select the interface of the connected printer.
- 6 Click the Check printer connection button.
- 7 Click the button you want to set.

– Use the Utility to set the printer's options

1 Click the Load Printer Settings button.



2 Select the tab you want and set options.



Use the following table to Printer's Options setting

Name	Description
Code Page	Set to the selected code page.
Cut	Set the presence or absence of cutting (ON, OFF). Set the cut mode (Partial Cut, Full Cut, Command Cut). Certainly, the cutting setting must be ON to operate properly.
Melody	Set whether to use melody (ON, OFF). Set the melody type (Melody A, Melody B, Melody C). Certainly, for normal operation, the melody setting must be ON.
Density	Set the print density. The range is 1 to 8.
Paper Width / Char Per Line (Based on Font A)	Set the number of characters per line. 80mm(42, 48CPL), 82.5(46, 53CPL), 58mm(30, 32, 35CPL) settings are available. (Based on Font A)

ECO Mode	<p><b>Line Space</b> -Set line spacing with the paper saving function. You can set from Normal to 50%, 75%, and 90%.</p> <p><b>Line Feed</b> -Set up line feed with paper saving features. You can set from Normal to 50%, 75%, and 90%.</p> <p><b>1D Barcode</b> -Set barcode height with paper saving function. You can set from Normal to 50%, 75%, and 90%.</p>
Font Replace	<p>Configures font replacement between Font A and Font B. Example) When A → B / B → A are set, Font A is replaced by Font B, and Font B is replaced by Font A when printing.</p>
Beep Time After Cut	<p>Set the beep time after cutting. It can be set from OFF to 1 to 3 seconds.</p>
Buzzer	<p>Set whether to use Buzzer.</p>
Cash Drawer When Cut	<p>Set the function to open the Cash Drawer when cutting.</p>
Cover Close Cut	<p>After closing the printer cover, set whether or not to cut.</p>
Near End Sensor	<p>Turns the Near End Sensor ON/OFF. (Cube printer only)</p>

The code page list is as follows.

GB2312	BIG5
Korean	Japanese
PC437	Katakana
PC850_Multi	PC860_PT
PC863_CA	PC865_Nordic
West Europe	Greek
Hebrew	East Europe
Iran	WPC1252
PC866_Cyri-2	PC852_Latin2
PC858	IranII
Latvian	Arabic
PT15111251	PC747
WPC1257	Vietnam
PC864	PC1001
Uigur	WPC1255_IL
WPC1256	PC437_Europe
PC858_Multi	PC861_IS
PC866_RU	PC855_BGL
PC857_TR	PC862_Hebrew
PC737_Greek	PC851_Greek
PC869_Greek	PC928_Greek
PC772_LTU	PC774_LT
PC874_Thai	WPC1252_LT1
WPC1250_Lati2	WPC1251_CY
PC3840_IBM-Ru	PC3841_Gost
PC3843_Polish	PC3844_CS2
PC3845_HU	PC3846_TR
PC3847_B-ABNT	PC3848_BR
PC2001_LT	PC3001_EE-1
PC3002_EE-2	PC3011_LV-1
PC3012_LV-2	PC3021_BG
PC3041_MT	Thai

Configuration Settings

Config

Interface

NV

BlackMark

Serial

Baudrate

9600

SET

Network

IP Address

192 . 168 . 0 . 1

SET

Subnet

255 . 255 . 255 . 0

SET

Gateway

192 . 168 . 0 . 254

SET

SET ALL(IP, Subnet, Gateway)

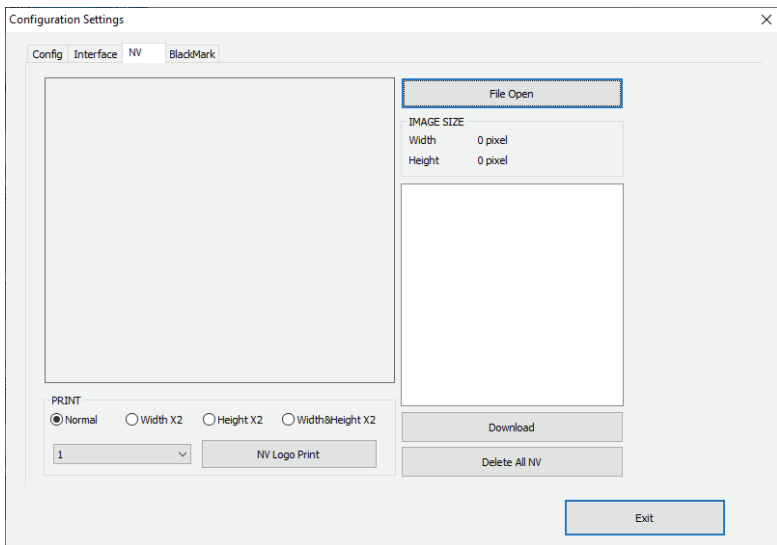
USB Mode

USB

Virtual COM

Exit

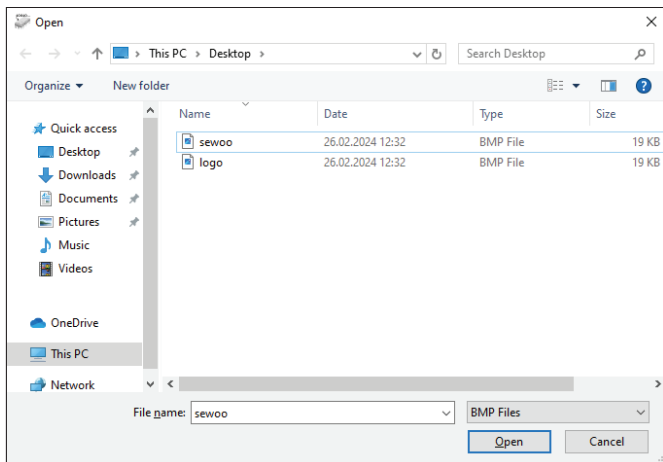
Name	Description
Serial	Set the communication speed of the serial port.
– Baudrate	– Settings are 9600, 19200, 38400, 57600, and 115200.
Network	
– IP Address	Set the IP address, subnet, and gateway. You can also set it in the Ethernet printer settings on the MemorySaver initial screen.
– Subnet	
– Gateway	
USB Mode	USB or virtual COM mode can be set.



With the function of saving BMP files to flash memory, you can download up to 6 files. Downloaded NV images can be printed by selecting the original size, width x 2, height x 2, or width & height x 2.

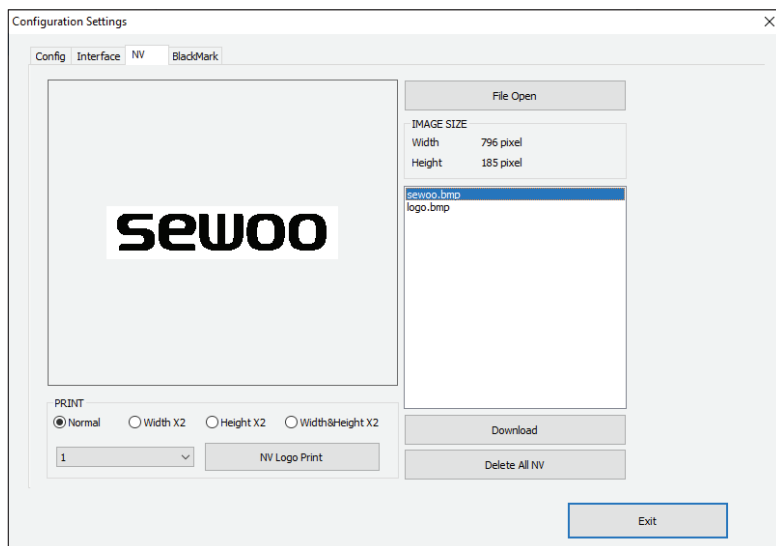
### < How to use >

- 1 Click the Open File button and select a bitmap image.





- The names of the selected bitmap images are displayed in the list on the right, and up to 6 can be selected.



- Click the download button to save it to your printer.
- The saved NV image can be printed using the print button on the left.

Configuration Settings

Config

Interface

NV

BlackMark

Using BlackMark

ENABLE

DISABLE

Sensitivity

12

Set L

Set H

Test BlackMark

Print Sample

Feed to next cut position

BlackMark

300

1 ~ 1000mm

Set distance between BlackMarks

0

-18 ~ 0mm

Set cutting position from BlackMark = F

13

13 ~ 100mm

Set print position from cutting position = E

\*CAUTION: F <= E -13

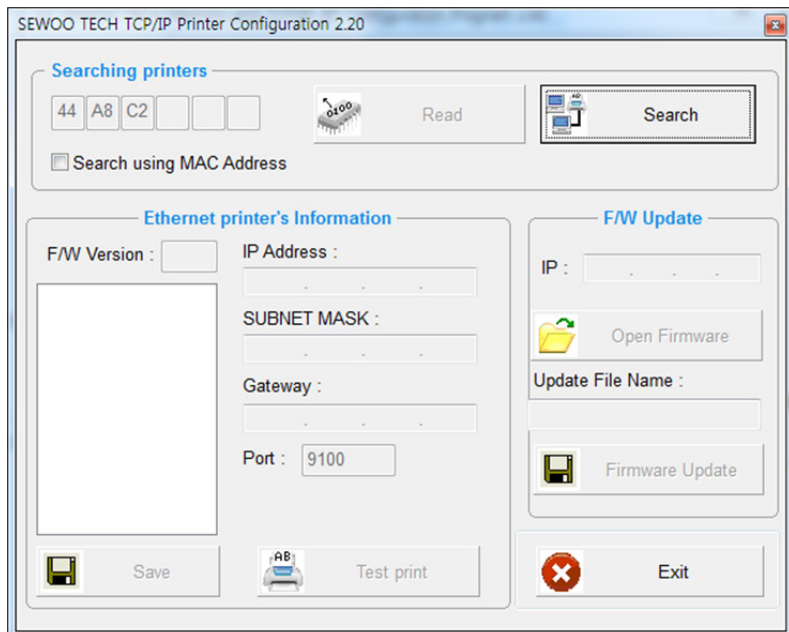
If the conditions are not met, it may not operate properly.

Exit

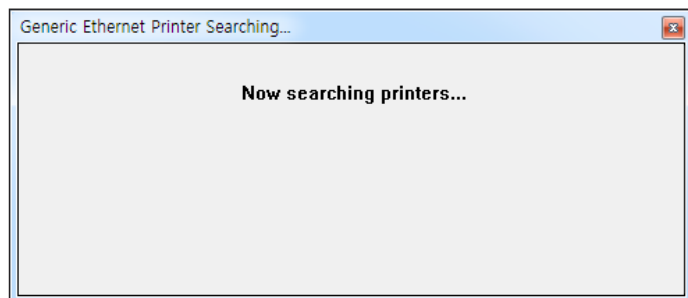
Name	Description
Using BlackMark	Set whether to activate blackmark.
Sensitivity	Set black mark sensitivity. Can be set from 1 to 12.
Set distance between BlackMarks	Set the black mark sensing length.
Set cutting position from BlackMark(F)	After detecting black marks, set the bottom margin before cutting. It can be set to at least -18mm. However, this value must be less than or equal to the value obtained by subtracting 13 from the output position setting value based on the cutting position (refer to CAUTION).
Set print position from cutting position(E)	Set the top margin for the next output. It can be set from 13mm to 100mm.

– You can set up TCP/IP with the utility.

- 1 Click the Ethernet printer settings button.

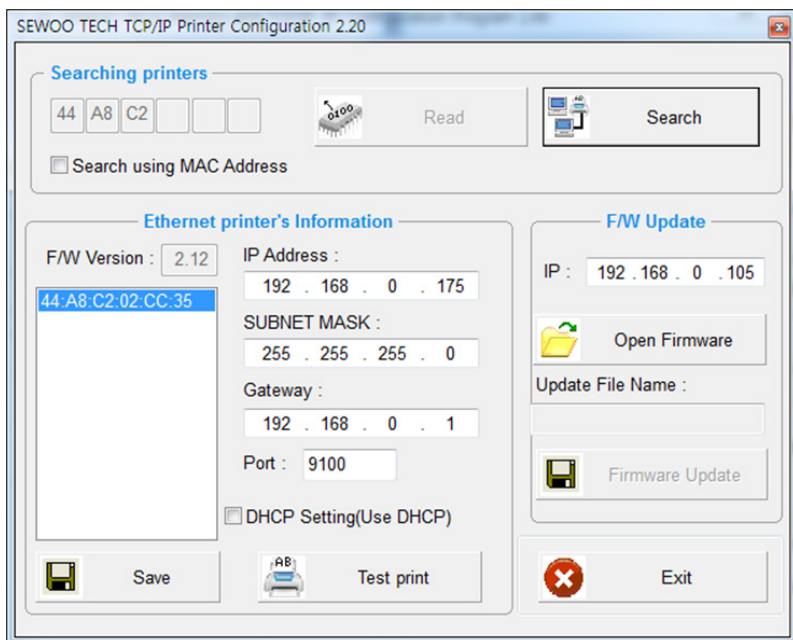


- 2 Click the Search button to find the printer.  
(Once the search is complete, please check if the MAC address matches.)



3 You can set as follows.

(To use DHCP, you must check the DHCP settings.)



4 Press the test print button to check if printing is normal.

5 When you complete the settings, save them.

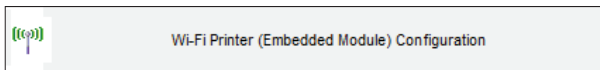
– You can configure LAN settings using the utility.



### CAUTION!

Only the Embedded Module type can be set. USB Dongle Type cannot be used.

- 1 Click the Wi-Fi (Embedded Type) printer settings button.



- 2 Click to open the port.
- 3 Read Wi-Fi information.
- 4 Make settings.
- 5 When you have completed the settings, save.

SEWOO TECH Wi-Fi(Embedded Module) Printer Configuration L02

**Port and Wi-Fi Information**

**Port Information**

Port :  BaudRate :  Open Port

Data Bits :  Parity :  Close Port

Stop Bits :  Flow Control :

**Wi-Fi Information**

MAC address :  Get Wi-Fi Information Save Wi-Fi Information

SSID :

IP :  TCP PORT :  Exit

NetMask :  ☒ DHCP Settings Reset (Factory Settings)

Gateway :  WPS

DNS :

Wi-Fi Band :

Wi-Fi Mode :

Wi-Fi Channel :

Wi-Fi Encryption :

Wi-Fi Authentication :

Using KEY ID :

WEP Key

KEY ID 1 :  HEX

KEY ID 2 :  HEX

KEY ID 3 :  HEX

KEY ID 4 :  HEX

Progress :

**WPA Authentication**

WPA Authentication :  WPA Encryption :

WPA Key :  Enterprise Settings

WPA Key is a write-only. The input range is 8 to 63 ASCII or 64 hex characters

Wi-Fi Information	
MAC address :	84:72:07:38:5E:84
SSID :	SW_5E84
IP :	192 , 168 , 100 , 10
NetMask :	255 , 255 , 255 , 0
Gateway :	192 , 168 , 100 , 1
DNS :	192 , 168 , 100 , 1
<input type="checkbox"/> DHCP Settings	
<input type="button" value="Get Wi-Fi Information"/> <input type="button" value="Save Wi-Fi Information"/>	
<input type="button" value="Exit"/>	
<input type="button" value="Reset (Factory Settings)"/>	
<input type="button" value="WPS"/>	



– Reset(Factory Settings) : Wi-Fi setting will be factory reset.

Initialization information
Wi-Fi Mode : Soft-AP
Chnannel : 1
Encryption : None
SSID : SW_XXXX / MOBILE_PRINTERXXXXXX(POS Printer / Mobile Printer)
IP Address : 192.168.100.1
Subnet Mask : 255.255.255.0
Gateway : 192.168.100.1



WPS : Ability to automatically connect to AP even if user does not enter setting information.  
(AP must support WPS function.)

### <How to use>

Press the WPS button in the Wi-Fi setting utility and press the AP WPS button to connect.

Use the following table to Wireless LAN setting.

Name	Description
SSID	The Network name to connect.
Wi-Fi Mode	Set the mode of the device to Ad-hoc, SoftAP, Infrastructure.
Wi-Fi Channel	Set the channel to use. 2.4GHz : 1 ~ 13 5GHz : 36 ~ 64, 100 ~ 165
Wi-Fi Encryption	Set the type of Encryption to none, WEP-64, WEP-128 or WPA/ WPA2, Enterprise.(EAP-TLS, EAP-TTLS, PEAP-MSCHAPv2)
Wi-Fi Authentication	Set the type of Authentication to open system, shared key or both.
Using KEY ID	Set the number of KEY to use from No. 1 to No. 4.
KEY ID 1 ~4	Enter value for up to 4 KEYS to ASCII or HEX.
DHCP Settings	IP address and DNS options are obtained using DHCP.
TCP Port	Set the port to use.
WPA Authentication	Set the type of Authentication to WPA-PSK, WPA2-PSK, Auto / TKIP, AES, Auto

– To Set Wi-Fi printer correctly, you need to check the AP's or Router's setting in advance. Ex) D-Link Router (Model: DIR-820L)

**SSID :** R&D\_dlink24G  
**IP :** 192 . 168 . 0 . 192  
**Netmask :** 255 . 255 . 255 . 0  
**Gateway :** 192 . 168 . 0 . 1  
**DNS :** 192 . 168 . 0 . 1

**Wi-Fi Mode :** infrastructure  
**Wi-Fi Channel :** 6  
**Wi-Fi Encryption :** WPA  
**Wi-Fi Authentication :** both  
**Using KEY ID :** KEY ID 1

**KEY ID 1 :**  ASCII  
**KEY ID 2 :**  ASCII  
**KEY ID 3 :**  ASCII  
**KEY ID 4 :**  ASCII

☐ DHCP Settings  
**TCP Port :** 9100

**WPA**  
**WPA Authentication :** WPA2-PSK AES  
**WPA Encryption Key :** 12345678  
 WPA Key is characters of 8 ~ 63 length

**WIRELESS**  
 Use this section to configure the wireless settings for your D-Link Router. Please note that changes made on this section may also need to be duplicated on your Wireless Client.

**WIRELESS NETWORK SETTINGS**  
**Wireless Band :** 2.4GHz Band  
**Enable Wireless :** ☒ Always   
**Wireless Network Name :** R&D\_dlink24G (Also called the SSID)  
**802.11 Mode :** Mixed 802.11n, 802.11g and 802.11b  
**Enable Auto Channel Scan :** ☒  
**Wireless Channel :** 2.437 GHz - CH 6  
**Transmission Rate :** Best (automatic)  
**Channel Width :** Auto 20/40 MHz  
**Visibility Status :** ☒ Visible ☐ Invisible

**WIRELESS SECURITY MODE**  
 To protect your privacy you can configure wireless security features. This device supports three wireless security modes, including WEP, WPA-Personal, and WPA-Enterprise. WEP is the original wireless encryption standard. WPA provides a higher level of security. WPA-Personal does not require an authentication server. The WPA-Enterprise option requires an external RADIUS server.  
**Security Mode :** WPA-Personal

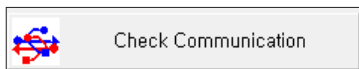
**WPA**  
 Use WPA or WPA2 mode to achieve a balance of strong security and best compatibility. This mode uses WPA for legacy clients while maintaining higher security with stations that are WPA2 capable. Also the strongest cipher that the client supports will be used. For best security, use WPA2 Only mode. This mode uses AES(CCMP) cipher and legacy stations are not allowed access with WPA security. For maximum compatibility, use WPA Only. This mode uses TKIP cipher. Some gaming and legacy devices work only in this mode.  
 To achieve better wireless performance use WPA2 Only security mode (or in other words AES cipher).  
**WPA Mode :** Auto (WPA or WPA2)  
**Cipher Type :** TKIP and AES  
**Group Key Update Interval :** 3600 (seconds)

**PRE-SHARED KEY**  
 Enter an 8- to 63-character alphanumeric pass-phrase. For good security it should be of ample length and should not be a commonly known phrase.  
**Pre-Shared Key :** \*\*\*\*\*

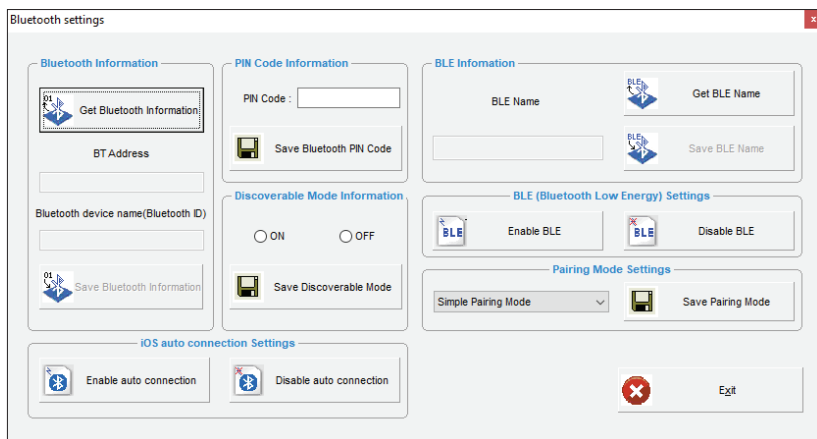


– You can set up Bluetooth using the utility.

- 1 Click the Check printer connection button and then click the Bluetooth printer settings button.




- 2 Click to open the port.



3 Check the settings.

Bluetooth settings

Bluetooth Information




Get Bluetooth Information

BT Address

00:13:7B:40:32:30

Bluetooth device name(Bluetooth ID)


POS Printer



Save Bluetooth Information

PIN Code Information


PIN Code : ?



Save Bluetooth PIN Code

Discoverable Mode Information


☒ ON ☐ OFF




Save Discoverable Mode

BLE Information

BLE Name





Get BLE Name




Save BLE Name

BLE (Bluetooth Low Energy) Settings

 Enable BLE  Disable BLE



Pairing Mode Settings

Simple Pairing Mode



Save Pairing Mode

iOS auto connection Settings

 Enable auto connection  Disable auto connection

Exit

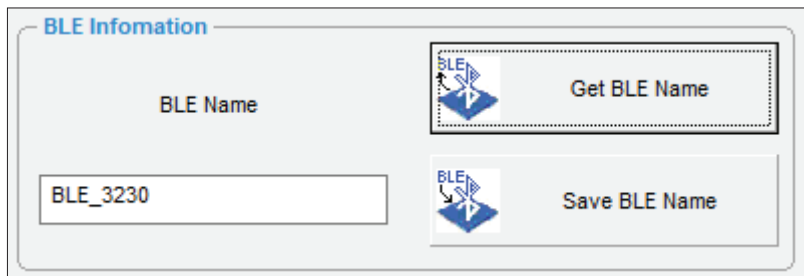
4 Save the settings information.

Use the following table to Bluetooth setting.

Name	Description
BT Address	The MAC address for Bluetooth Module.
Bluetooth device name (Bluetooth ID)	This is the name that appears in the list when searching for Bluetooth.
PIN Code	This value is required when pairing with a printer set to Pincode mode. (Default : 0000 or 1234)
Discoverable Mode	Set whether the printer will appear or not in a Bluetooth inquiry on another device, typically, a master device.
iOS auto connection Settings	This feature automatically connects to previously connected iOS devices.
Pairing Mode Settings	This function sets the pairing mode. <ul style="list-style-type: none"><li>– Numeric Comparison Mode</li><li>– Simple Pairing mode (Default)</li><li>– Pincode mode</li></ul>
BLE Name	This is the name that appears in the list when searching for BLE
BLE Settings	This is a function to select whether or not to set up BLE.

This is how to set the BLE (Bluetooth Low Energy) name.

- 1 Click the Get BLE Name button.



The screenshot shows a dialog box titled "BLE Information". Inside, there is a label "BLE Name" above a text input field containing "BLE\_3230". To the right of the input field, there are two buttons: "Get BLE Name" and "Save BLE Name". The "Get BLE Name" button is highlighted with a dashed border and a blue icon, indicating it is the next step in the process.

- 2 Enter the BLE name and click the Save BLE Name button to save it.

# sewoo

**Aroot Co., Ltd.**

28-6, Gajangsaneopdong-ro, Osan-si,  
Gyeonggi-do, 18103, Republic of Korea

TEL: +82-31-8077-5000 / FAX: +82-31-624-5310

[www.miniprinter.com](http://www.miniprinter.com)